

Early Childhood Education

Natasha Gray

AAS Outreach Specialist

DISCOVER



SEATTLE COLLEGES

North • Central • South



**SEATTLE
PROMISE**

Congratulations

W H Y

Early Childhood Education?



***Young children need high quality, well educated teachers.
Families need caring informed advocates.***

About our Program





Stackable Certificates
AAS Degree
BAS Degree



Evenings
Weekends
Online



Anti-Bias
Applied Learning



One of the Seattle Colleges

Washington State's Early Childhood Education Stackable Certificates and Degrees

Updated 12/2018

ECE INITIAL CERTIFICATE

REQUIRED COURSES:

- ☐ ECED& 105 (5)
- ☐ ECED& 107 (5)*
- ☐ ECED& 120 (2)

SHORT CERTIFICATE OF SPECIALIZATION

REQUIRED COURSES:

- ☐ EDUC& 115 (5)*

CHOOSE 1 OPTION:

- EDUC& 130 (3)*
- ECED& 132 (3)
- ECED& 136 (3)
- ECED& 134 (3)
- ECED& 139 (3)

ECE STATE CERTIFICATE

REQUIRED COURSES:

- ☐ English 101 (5)*
- ☐ Math100+ (5)
- ☐ EDUC& 150 (3)*
- ☐ ECED& 180 (3)
- ☐ ECED& 190 (3)
- ☐ ECED& 160 (5)*

CHOOSE 1 OPTION:

- ECED& 170 (3)*
- EDUC& 130 (3)*

ASSOCIATE OF APPLIED SCIENCE

REQUIRED COURSES:

- ☐ English 101 (5)
- ☐ MATH 100+ or ACCT 110 (5)
- ☐ Human Relation Electives (5)
- ☐ US Culture OR Global St. (5)
- ☐ ECED& 132 (3)
- ☐ ECED& 139 (3)
- ☐ EDUC& 130 (3)*
- ☐ EDUC& 203 (3)
- ☐ CCE 240 (3)
- ☐ EDUC 219 (5)
- ☐ EDUC 222 (5)

CHOOSE 11 CREDITS OF ELECTIVES:

- CCE 195 (3)
- CCE 145 (4)
- CCE 200 (3)
- CCE 261 (1-6)
- ECED& 136 (3)
- ECED& 134 (3)
- EDUC 250 (5)

BACHELOR OF APPLIED SCIENCE ECE

REQUIRED COURSES:

- ☐ English 101 (5)
- ☐ QSR requirement (5)
- ☐ English Composition II or Technical Writing (5)
- ☐ Natural World courses (10)
- ☐ VLPA courses (15)
- ☐ ICS courses (10 can be USGS) (20)
- ☐ INFO 300 (2)
- ☐ ECE 305 (3)
- ☐ ECE 310 (5)
- ☐ ECE 315 (5)
- ☐ ECE 320 (3)
- ☐ ECE 350 (4)
- ☐ ECE 355 (3)
- ☐ ECE 405 (3)
- ☐ ECE 410 (4)
- ☐ ECE 415 (3)
- ☐ ECE 420 (5)
- ☐ ECE 430 (5)
- ☐ ECE 450 (5)
- ☐ ECE 480 (5)
- ☐ ECE 490 (5)

CHOOSE 60 CREDITS OF ELECTIVES

ASSOCIATE DEGREE
(90 CREDITS)

STATE ECE CERTIFICATE
(47 CREDITS)

SHORT CERTIFICATE
(20 CREDITS)

ECE INITIAL CERTIFICATE
(12 CREDITS)

STATE ECE CERTIFICATE
(47 CREDITS)

SHORT CERTIFICATE
(20 CREDITS)

ECE INITIAL CERTIFICATE
(12 CREDITS)

SHORT CERTIFICATE
(20 CREDITS)

ECE INITIAL CERTIFICATE
(12 CREDITS)

ECE INITIAL CERTIFICATE
(12 CREDITS)

ECE INITIAL CERTIFICATE
(12 CREDITS TOTAL)

SHORT CERTIFICATE OF
SPECIALIZATION
(20 CREDITS TOTAL)

STATE ECE CERTIFICATE
(47 CREDITS TOTAL)

ASSOCIATE DEGREE
(90 CREDITS TOTAL)

BACHELOR OF APPLIED
SCIENCE DEGREE
(180 CREDITS TOTAL)

General Staff Qualifications

Early Learning Providers



Use this as a summary document for staff qualifications. For complete staff qualification requirements, please see WAC 110-300-0100 online at www.tinyurl.com/WAC110-300-0100 for licensed center and family home providers as well as ECEAP Performance Standards online at www.tinyurl.com/ECEAPStandards for ECEAP sites. For a list of approved equivalents for each role, please see *Equivalent Options for Education (EPS_0037)* online at www.tinyurl.com/EduEquivalents. For more information about each role, visit the Role Determination Chart online at www.tinyurl.com/RoleChart.

Center-Based Programs (Licensed Centers or School Districts)	Minium Age Allowed	Minimum Hiring Requirement	Education Requirement (or Equivalent)	Time Allowed From Date of Hire or Promotion
Center Director¹	18	10 ECE Credits (12 children or less) 25 ECE Credits (13-24 children) 45 ECE Credits (25 or more children)	State Certificate (47 credits)	5 years or by Aug. 1, 2026
Center Assistant Director	18	Same as Center Director	State Certificate (47 credits)	5 years or by Aug. 1, 2026
Center Program Supervisor	18	Same as Center Director	State Certificate (47 credits)	5 years or by Aug. 1, 2026
Center Lead Teacher – Serving ECEAP	18	AA or Higher Degree in ECE	AA or Higher Degree in ECE	Upon Hire ²
Center Lead Teacher	18	High School Diploma	Initial Certificate (12 credits)	5 years or by Aug. 1, 2026
			Short Certificate (20 credits)	2 years from completing Initial Certificate
Center Assistant Teacher – Serving ECEAP	18	ECE Initial Certificate	Initial Certificate (12 credits)	Upon Hire
Center Assistant Teacher	18	High School Diploma	Initial Certificate (12 credits)	5 years or by Aug. 1, 2026
Center Aide	14	High School Diploma or Enrolled	High School Diploma Or Enrolled	N/A
Center Volunteer	14	None Required	None	N/A
Center Other Staff <i>These roles do not care directly for children and are not in ratio</i>	N/A	None Required	N/A	N/A



**MY BROTHER'S
TEACHER™**

Careers



Teaching

Philanthropy

Evaluator

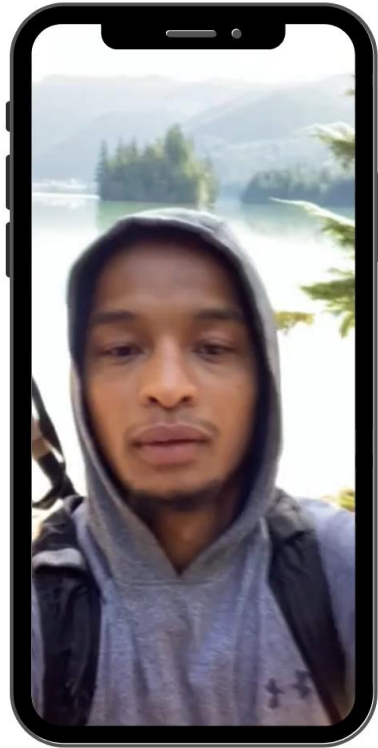
Advocacy

Licenser

Coach



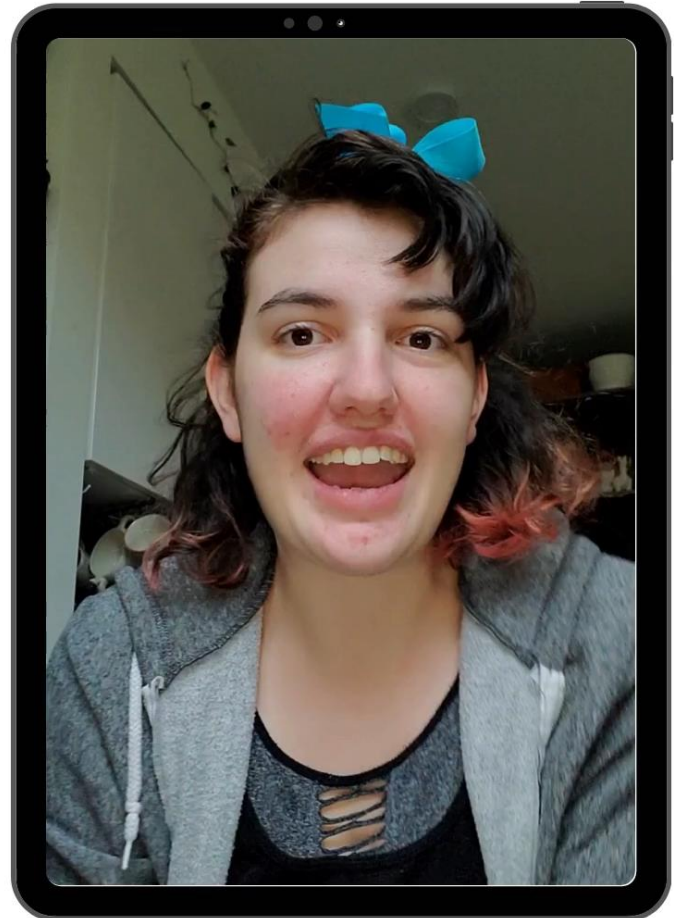
Hear from our
Students

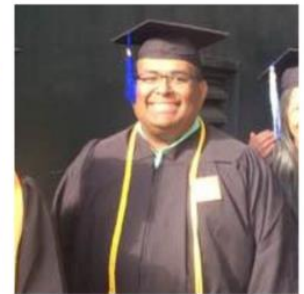


Meraf Tenar

NSC Early Education Alumni

Abby Fredericksen
NSC Early Education Alumni





Q&A

Program Contact



eceinfo@seattlecolleges.edu

Provide Feedback

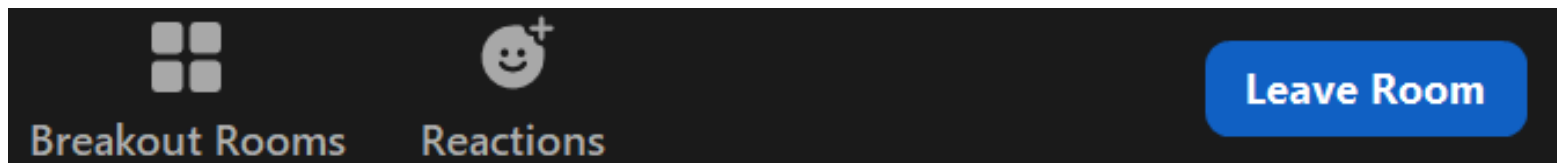
<https://go.seattlecolleges.edu/form/discover-feedback>

Thank you!

Next Session

Return to Main Session

(select “Leave Breakout Room” to return)



SEATTLE COLLEGES
North • Central • South